



LAUNCH CODE
ONE



A LEGACY OF FIRSTS

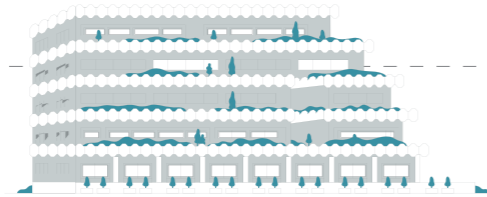
From building globally inspired homes to bringing the world home, Kalpataru has been the 'Kalpavriksh'—the wish-fulfilling tree for the city's glory. Starting its legacy in Peddar Road while defying norms of traditional real estate, to crowning Nepean Sea Road with beacons of luxury; Kalpataru has seen all the phases of the city, from South Bombay to South Mumbai to SoBo. Kalpataru has raised the city like a timeless dream— one address, one home, and one family at a time.



Neelambar

Pedder Road, 1974

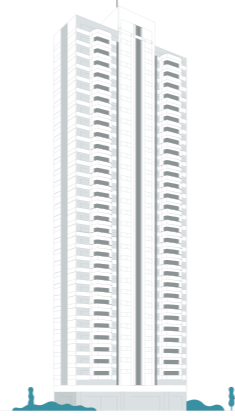
The first 21-storey marvel in a city that only knew low rises.



Swapnalok

Malabar Hill, 1975

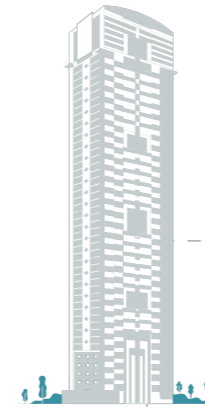
Unmatched to date, the city's first stepped-row homes with private terraces.



Kshitij

Nepeansea Road, 1975

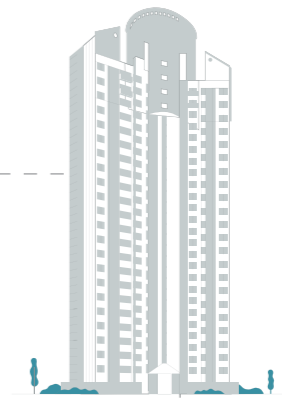
Mumbai's tallest building for more than a decade.



Kalpataru Heights

Mumbai Central, 1999

The tallest residential tower in the city at that time.



Kalpataru Habitat

Parel, 2005

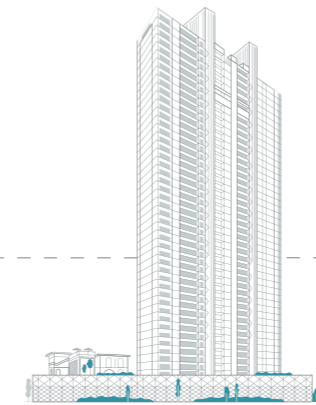
Pioneers of rooftop amenities & independent car parking.



Kalpataru Oceana

Prabhadevi, Ongoing

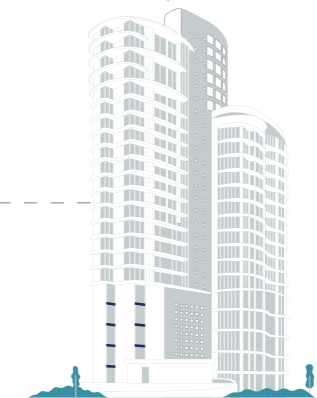
One grand home per floor with infinite horizon views.



Kalpataru Avana

Parel, 2022

Majestic abodes with views of the Eastern & Western shores.



Kalpataru Horizon

Worli, 2006

First to raise the 1st residential level to the 14th floor.

THE WORLD IS LOOKING AT WORLI

Once known for its textile mills, Worli has, over the years, transitioned from being a rewarding investment haven to being the hub of the city's finest luxuries and homes.

An unparalleled connectivity that makes any point in the city easily accessible, a glamorous social infrastructure, high-rise marvels, prime sea views, and favourable access to upscale institutions of the city make Worli the most attractive address for the crème de la crème of the nation.

Due to its strategic location, many new infrastructure projects have been planned for this locale; the Metro Line 3, and Sewri Worli Elevated Corridor, making travel to Mumbai's central business districts a cakewalk.



A Timeless Tribute to South Mumbai

INTRODUCING LAUNCH CODE ONE

Commemorating our love for luxury and the future of living, Launch Code One located right at the heart of Worli will be an exceptional blend of thoughtful, functional design and curated, aesthetic beauty. An abode the world will cherish forever, Launch Code One is a coming together of the city's most significant legacies; South Mumbai's, Kalpataru's, and yours.

- A rare mixed-use estate sprawling across 5 acres.
- Designed by international partners par excellence, Launch Code One is an amalgamation of the best from landmark high-rises & resorts from around the world.
- Panoramic vistas of the ocean, cityscape and the prestigious racecourse.
- Lavish amenity zones across five magnificent levels curated for self, family, and social circles.
- Expansive landscaped greens spread across acres.
- Unparalleled privacy with just two apartments per floor.
- Massive 7 levels of parking across basement and podium levels with EV charging stations, each space capacious enough to accommodate luxury sedans and SUVs.

Representational image

VIEWS AS MAGNIFICENT AS YOUR HOME

The orientation of the towers has been meticulously planned to maximize the visual indulgence from each home.

Residents can revel in the breath-taking views of the Arabian Sea, the iconic sea-link, the vibrant Worli cityscape, and Mahalaxmi Racecourse.



WHERE EXTRAORDINARY LIVING BECOMES A DAILY AFFAIR

When it comes to unparalleled living in the heart of South Mumbai, there's only Launch Code One. Apart from being a rare 5-acre haven, it boasts indulgences spanning across 5 exceptional levels. Each tier elevates your lifestyle with indoor and outdoor amenities curated to connect with self, family, and social circles.

- Ground level
- Podium level
- Clubhouse
- Eco-deck level
- Sky level

Ground Level



Representational image



Representational image

A haven for art admirers and solitude-loving minds, the Ground Level is elegantly adorned with sculptural elements, providing a vibrant atmosphere where inspirations and conversations merge.

Few Key Amenities:

Banquet Hall & Event Plaza

- Miyawaki Forest

- Kids' Play Area

- Walking Trail

- Pet Park

Podium Levels



A paradise curated for health and wellness lovers, the Podium Level of Launch Code One flaunts an array of fitness and wellness amenities, providing the ultimate sanctuary for well-being.

Few Key Amenities:

- Squash courts
-
- Indoor games room
-
- Pickleball/Badminton courts

Clubhouse



Step into the epitome of luxury and the heart of Kalpataru One, the clubhouse is an iconic space that offers unparalleled fitness and entertainment amenities, creating a haven for both relaxation and recreation.

Few Key Amenities:

Multi-level Gymnasium

- Spa

Eco-Deck Level

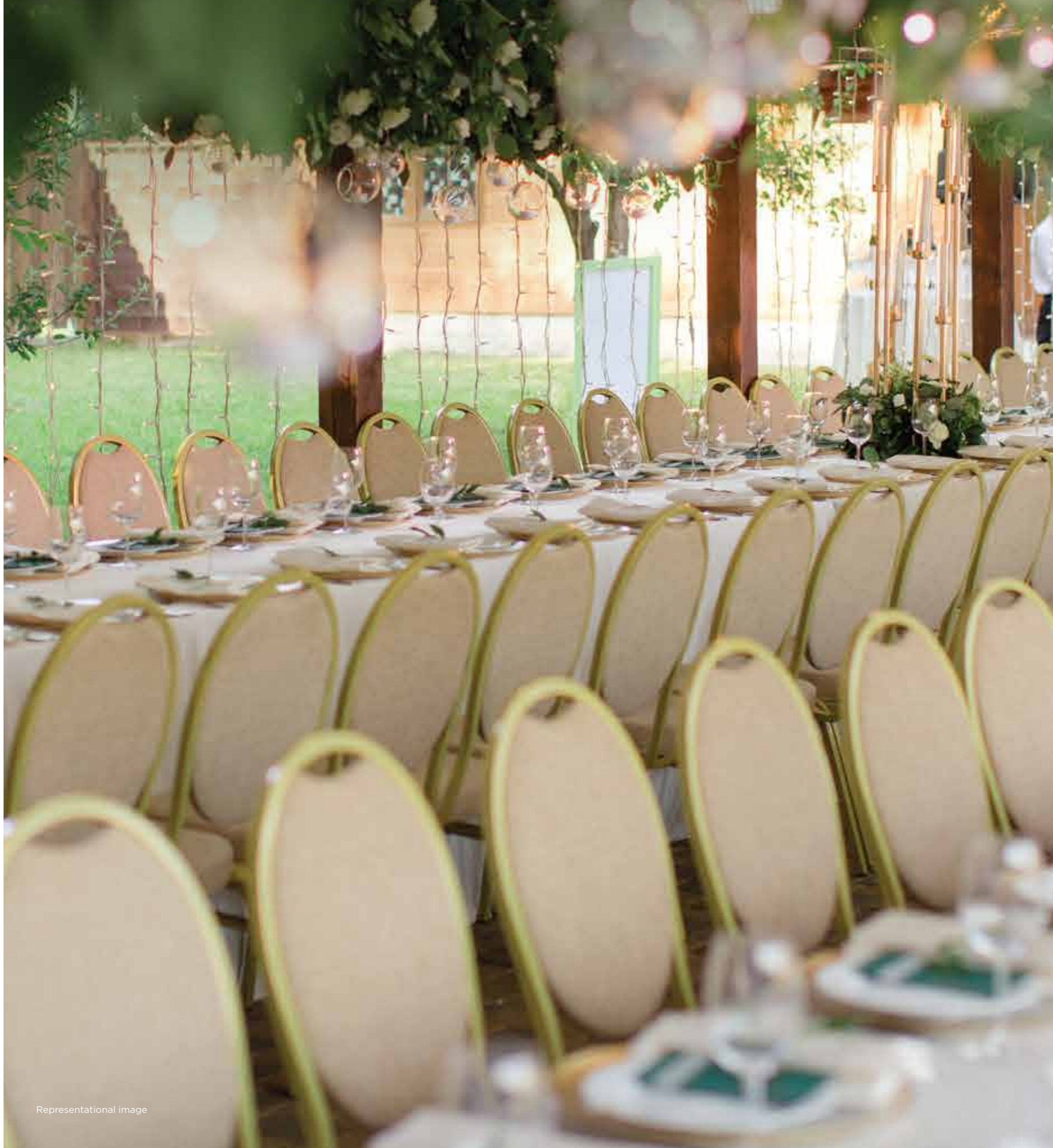


A majestic expanse of unmatched amenities, the Eco-deck brings to you a breathtaking space adorned with tranquil waterscapes, captivating lush green spaces, creating an oasis of serenity.

Few Key Amenities:

Lap pool with deck and spa pods

- Jogging track
- Event Lawn
- Salon

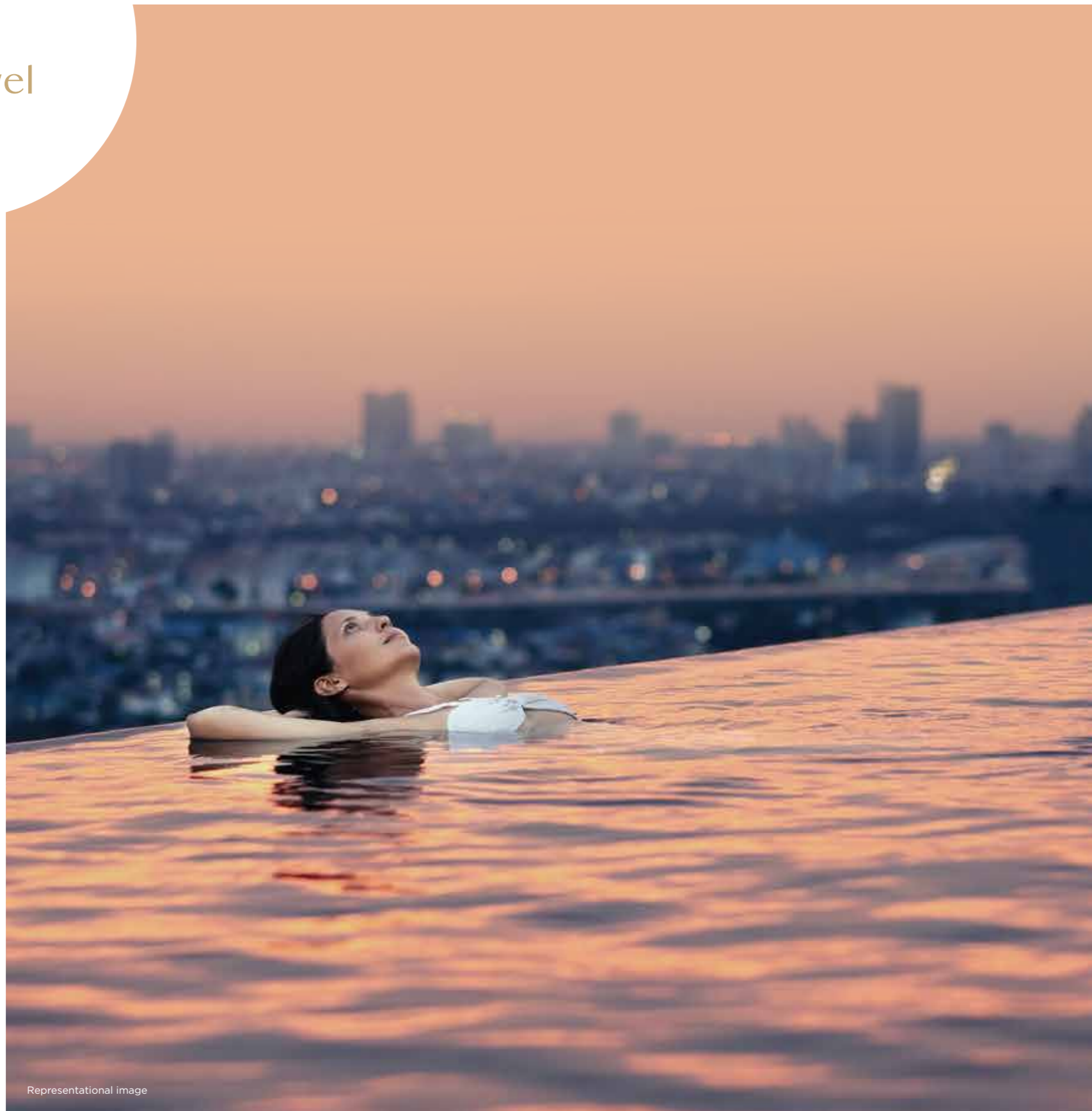


Representational image



Representational image

Sky Level



The Sky Level of Launch Code One takes leisure above and beyond. Each tower is crowned by unique amenities, offering a sanctuary of exclusive experiences. Imagine unwinding at the rooftop, where mesmerising views stretch as far as the eye can see, providing a daily escape from the mundane.

Few Key Amenities:

Sky Lounge

•

Lap Pool with Deck

A HEAVENLY SUITE FOR THOSE WHO'D SETTLE FOR NOTHING LESS.



Discover the epitome of luxury with living and bedroom spaces offering you the flexibility to design your home according to your vision. The residences are designed to create a harmonious flow of space that embodies luxury and functionality.

Only 2 residences per floor ensuring privacy.

Meticulously planned flexible spaces with minimal wastage in the passage area.

Maximised views of the bay and acres of green.

Majestic floor-to-floor height soars to an impressive 4 m in Tower A & 3.9 m in Tower B.

Separate entrance from the service lobby for house staff.

PARTNERS PAR EXCELLENCE



Representational image

The Heights, Phuket

HB Design (Singapore) Architects

HB Design was founded by Hans Brouwer in Hong Kong in 1995, following a distinguished career working for the internationally renowned firm of Sir Norman Foster and Partners. In the ensuing 20 years, the practice has grown to have offices in Singapore, Bangkok, and Phuket. The firm has a diverse and award-winning portfolio that spans high-rise residential, commercial, and mixed-use projects, such as The River and Mulberry Grove in Bangkok, President Place in Ho Chi Minh, and Sheraton on the Park in Sydney.

COEN (US) Landscape Designers

COEN is a leading global landscape design firm renowned for its innovative and holistic approach to architecture and interior design. Known for designing sustainable, aesthetically pleasing environments, COEN integrates cutting edge technology with timeless design principles across all its creations in Singapore, such as Eden, Tree House, West Gate, Village Hotel, and the Barracks Hotel Sentosa.



Representational image

Burj Khalifa, Dubai
ALT Façade, Façade Consultant

ALT Façade (Taiwan) Façade Technical Consultant

Established three decades ago, ALT Façade is committed to delivering innovative, sustainable, and high-performance façade solutions. Their prestigious projects include iconic landmarks such as Burj Khalifa, Shanghai World Financial Center, Waldorf Astoria Las Vegas, Samsung\ Seochoe, and Godrej One.

SEED Engineering (UAE) MEP Consultant

SEED Engineering is dedicated to bridging the gap in building engineering and positively impacting MEP Engineering service design. With landmark projects across the Middle East, Africa, Singapore, and the Indian subcontinent, their portfolio includes prestigious developments such as Hilton Awasa Resort & Spa, Ritz Carlton Worli, Oberoi Mall, and Park Hyatt UAE.

MKA International (US) Structural Consultant

MKA International, established by John Madsen and Jozef Kneppers three decades ago, are pioneers of multidisciplinary construction and engineering consulting firm. With global footprints spanning the US, UK, and Japan, they have been instrumental in prestigious projects such as MGM, Las Vegas and the historic Trunnion Bascule Bridge, Chicago.

Façade Technical Consultant Inhabit India (Mumbai)

Inhabit is a unique multidisciplinary team of some of the world's most celebrated professionals dedicated to enhancing the built environment for the benefit of both people and nature. Their impressive portfolio includes projects such as T2 at Mumbai International Airport in India, the Shangri La Hotel in Bangalore, and the OPPO Technology + Research Centre Tower in China.



Representational image

WASL Tower, Dubai
SEED Engineering, MEP Consultant

Gokani Consultants (Mumbai) Structural Consultant

Founded in 1980 by IIT alumnus Harshad Gokani, the firm has consistently delivered director-level attention to their structural solutions emphasising on quality, detailing, and constructability. Their diverse portfolio spans various sectors, including residential and commercial buildings, shopping malls, IT parks, educational institutions, hospitals, and industrial facilities.

Barker Mohandas (UAE) Vertical Transportation Consultant

Founded in 2000 by Rick Barker and Paliath Mohandas, the visionary pioneers of vertical travel, this firm brings together seasoned professionals from Otis, Kone, and Mitsubishi to offer specialised consulting services for elevator systems in some of the world's most iconic projects, including the Nakheel Tower in Dubai, World One in Mumbai, and the Great American Tower in Cincinnati.





Kalpataru One is registered with MahaRERA bearing reg. no: P51900055246. For further details please visit: <http://maharera.mahaonline.gov.in>.

Head Office: 101, Kalpataru Synergy, Opp. Grand Hyatt, Santacruz (E), Mumbai - 400 055. | Tel.: +91 22 3064 3065 | Email: sales@kalpataru.com | Website: www.kalpataru.com

Disclaimer: The photographs, images, plans, drawings, sketches, renderings, pictorial and graphical representations, specifications, illustrations, other information, etc. contained in the brochure/marketing collateral are typical stock/standard photography used by the industry at large and are intended to indicate a conceptual and aspirational lifestyle. The plans, layout, design, facilities, amenities are subject to approval of the concerned authorities. The pictures and images alongwith fixtures and fittings are shown hereinabove are not part of the offerings in the Project and the same is just for the reference and indicative purpose only. The information and material contained in this booklet/brochure/marketing collateral are intended to supplement the information available on the website at <http://maharera.mahaonline.gov.in/> and is not intended to be a substitute thereto. Any person who is considering /evaluating any apartment/unit in the Project, are required to independently analyse, acquaint and formalize themselves with the information and disclosure pertaining to the Project as uploaded on <http://maharera.mahaonline.gov.in/>. These printed materials does not constitute an offer and/or contract of any type between the Promoter and the recipient. All transactions in respect of this Project shall be subject to the terms and conditions of the agreement for sale entered between the Promoter and the Allottee. The Project is secured with Vistra ITCL (India) Limited. *T & C Apply.