



The doors to new  
opportunities  
are now open.



Piramal Mahalaxmi sets  
the stage for idyllic  
living in South Mumbai.



[piramalmahalaxmi.com](http://piramalmahalaxmi.com)

THE AMENITIES

# An exclusive lifestyle for the elite.

The amenities within Piramal Mahalaxmi set a new standard of urban living for families.

Residents will be able to enjoy a variety of conveniences, with extensive spaces for socialising and unwinding.



LEGEND

- |  |   |                                 |
|--|---|---------------------------------|
| 1. Tower Lobby Entry                     | 9. Party Lawn                             | 17. Pool Pavillion              |
| 2. Viewing Deck                          | 10. Helix Party Terrace / Viewing Terrace | 18. 5 Lane Lap Pool             |
| 3. Sitting Planter And Garden            | 11. Sitting Alcove                        | 19. Jacuzzi                     |
| 4. Jogging / Bicycle Track               | 12. Water Feature / Helix Sculpture Below | 20. Climbing Wall               |
| 5. Grand Lawn                            | 13. Viewing Pavillion                     | 21. Helix Club House Entry      |
| 6. Exclusive Central Tower Swimming Pool | 14. Open Deck Sitting Area                | 22. Ramp To Helix Party Terrace |
| 7. Half Basketball Court                 | 15. Reading Corner                        | 23. Amphitheatre                |
| 8. Children's Adventure Meadow           | 16. Children's Pool                       | 24. Rooftop Observatory Deck    |

## SOUTH TOWER AMENITIES

- Rooftop Observatory Deck
- Exclusive Fitness Centre
- Library & Residents' Lounge

## CENTRAL TOWER AMENITIES

- Exclusive Fitness Centre
- Dedicated Swimming Pool
- Library & Residents' Lounge
- Rooftop Observatory Deck

## INDOOR COMMON AMENITIES

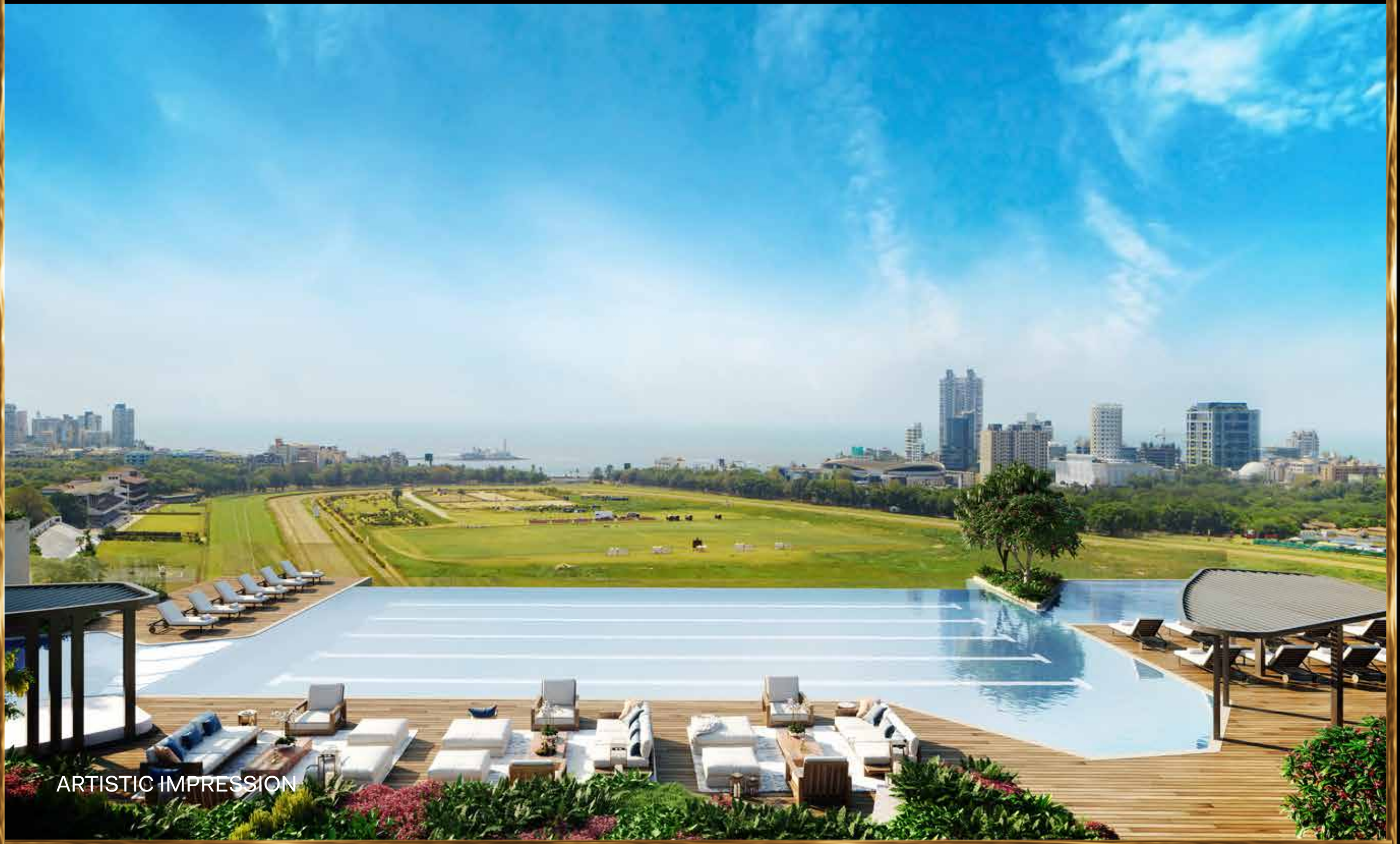
- Spa for Men & Women
- Squash Court
- Function room
- Mini Theatre
- Indoor Games Room
- Café
- Yoga Room
- Multipurpose Hall



ARTISTIC IMPRESSION

INFINITY POOL

Elevated living.



ARTISTIC IMPRESSION



OBSERVATORY DECK

An indisputable masterpiece  
standing tall amid the  
magnanimous backdrop  
of South Mumbai.